



# **SEPLoS BatteryMonitor Installation Guide**

Dongguan Seplos Technology Co., Ltd

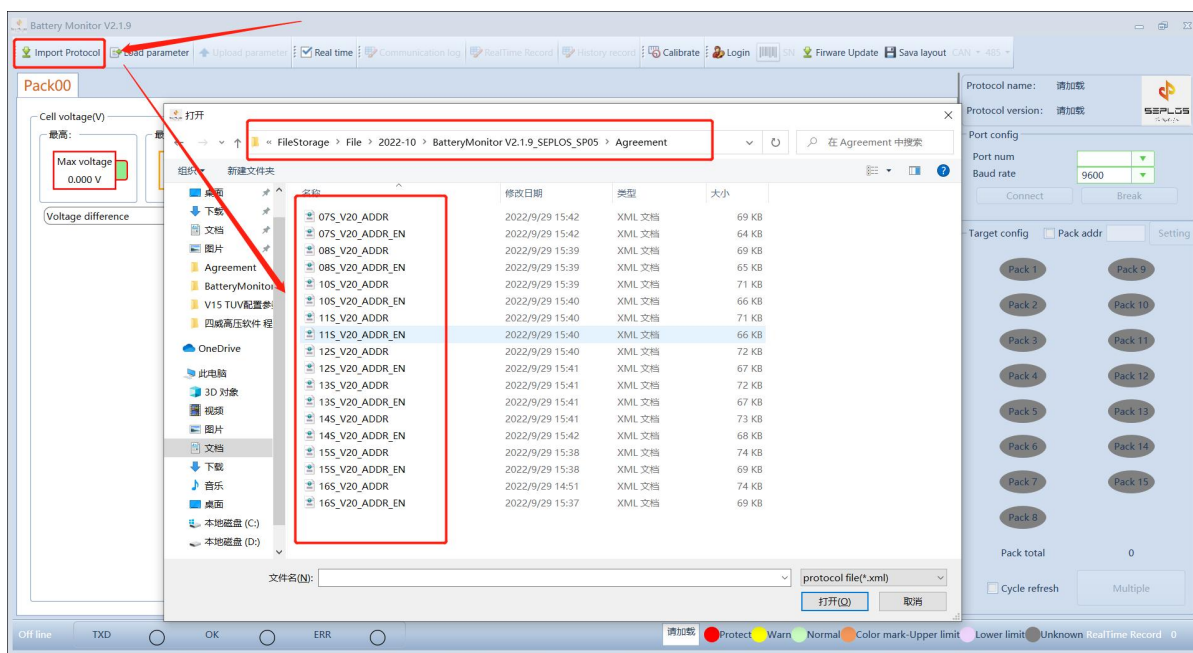
## 1. Unzip the BatteryMonitor file

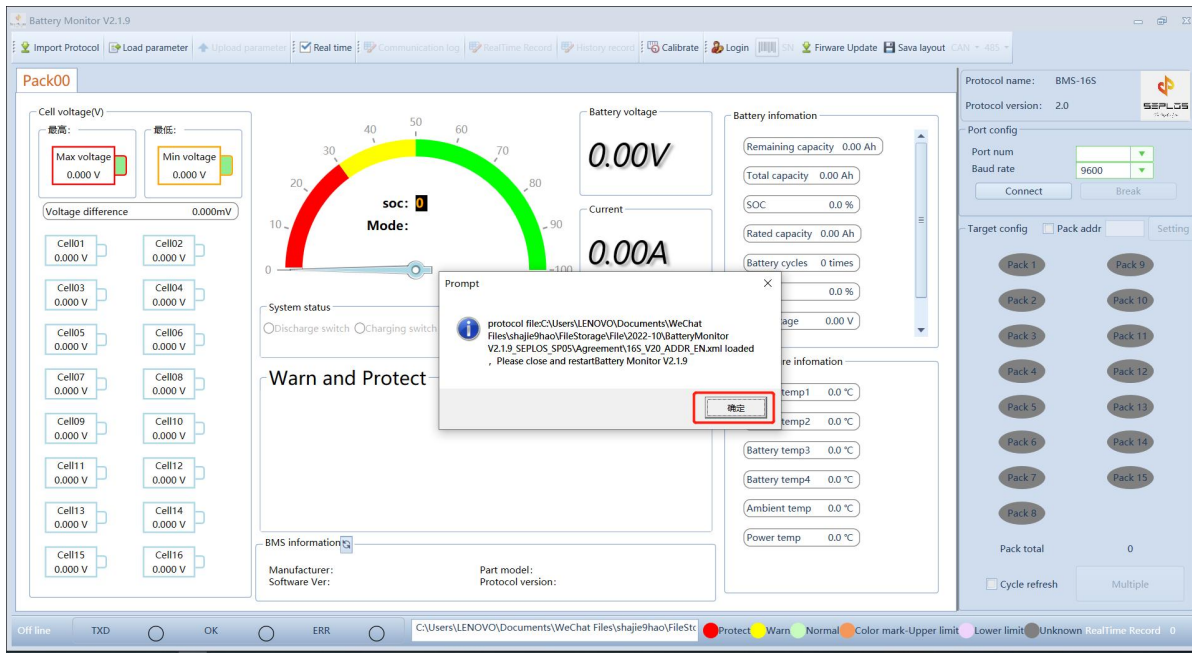


## 2. Open the folder - Find the application file - Double click the application to run the software

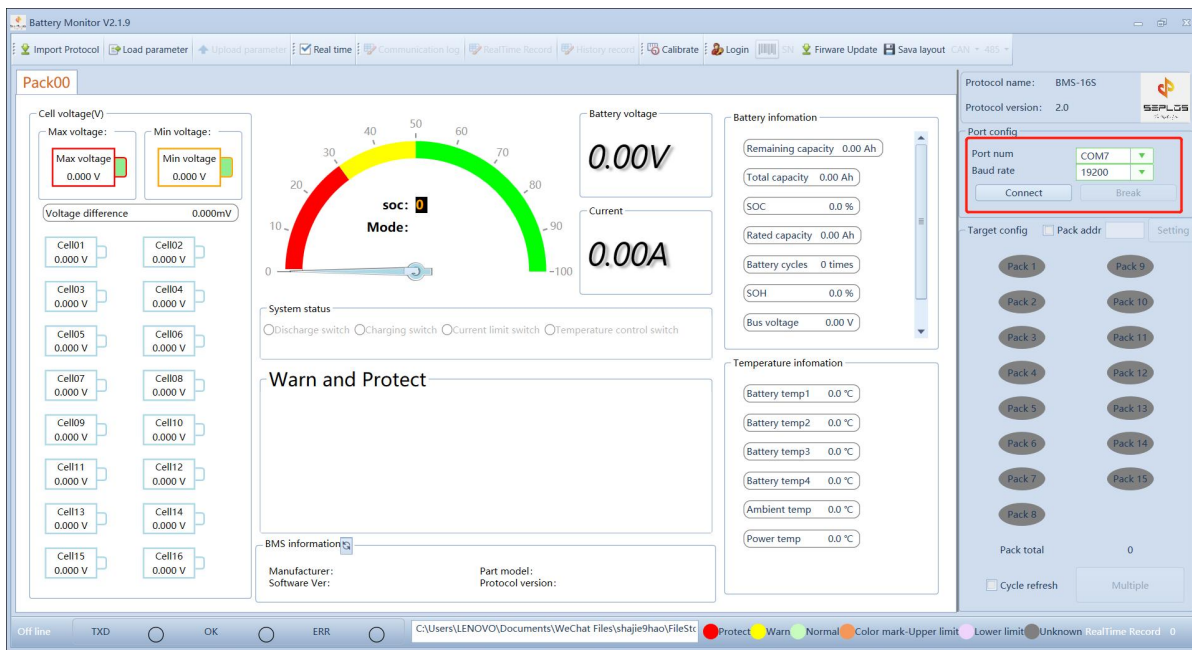
| 名称                          | 修改日期             | 类型        | 大小       |
|-----------------------------|------------------|-----------|----------|
| Agreement                   | 2022/10/6 15:14  | 文件夹       |          |
| de                          | 2022/10/6 15:14  | 文件夹       |          |
| es                          | 2022/10/6 15:14  | 文件夹       |          |
| ja                          | 2022/10/6 15:14  | 文件夹       |          |
| Languages                   | 2022/10/6 15:14  | 文件夹       |          |
| logs                        | 2022/10/6 15:14  | 文件夹       |          |
| RealTimeRecord              | 2022/10/6 15:14  | 文件夹       |          |
| ru                          | 2022/10/6 15:14  | 文件夹       |          |
| BatteryMonitor              | 2022/9/5 21:37   | 应用程序      | 2,078 KB |
| BatteryMonitor.exe.config   | 2021/10/20 19:52 | CONFIG 文件 | 3 KB     |
| BatteryMonitor.pdb          | 2021/10/20 20:10 | PDB 文件    | 522 KB   |
| DevExpress.Data.v15.2.dll   | 2017/11/17 21:43 | 应用程序扩展    | 5,082 KB |
| DevExpress.Data.v15.2       | 2017/11/17 21:43 | XML 文档    | 1,098 KB |
| DevExpress.Images.v15.2.dll | 2017/11/17 21:43 | 应用程序扩展    | 3,221 KB |

## 3. Click 'import protocol' - Find the open the 'Agreement' file - choose the corresponding agreement (The one end with 'EN' means English version agreement) - Click 'open' - Click 'confirm'

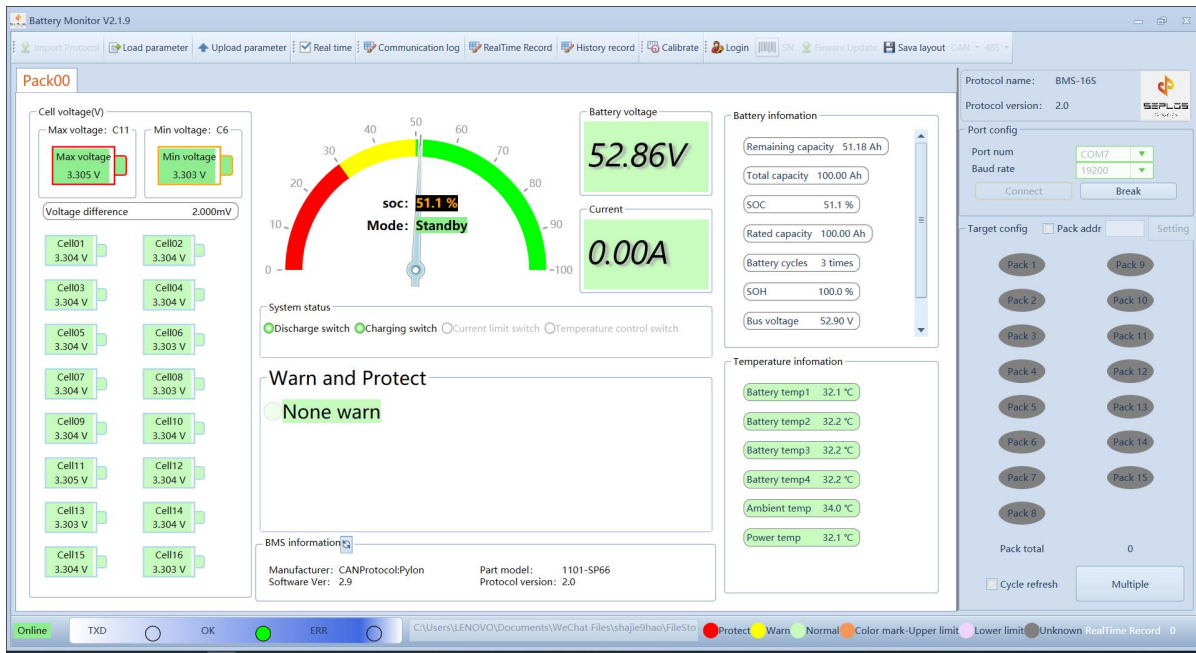




4. Choose the port number ( the port number of USB to RS485 adapter can be identified automatically) - Choose baud rate 19200 - Click 'Connect' .

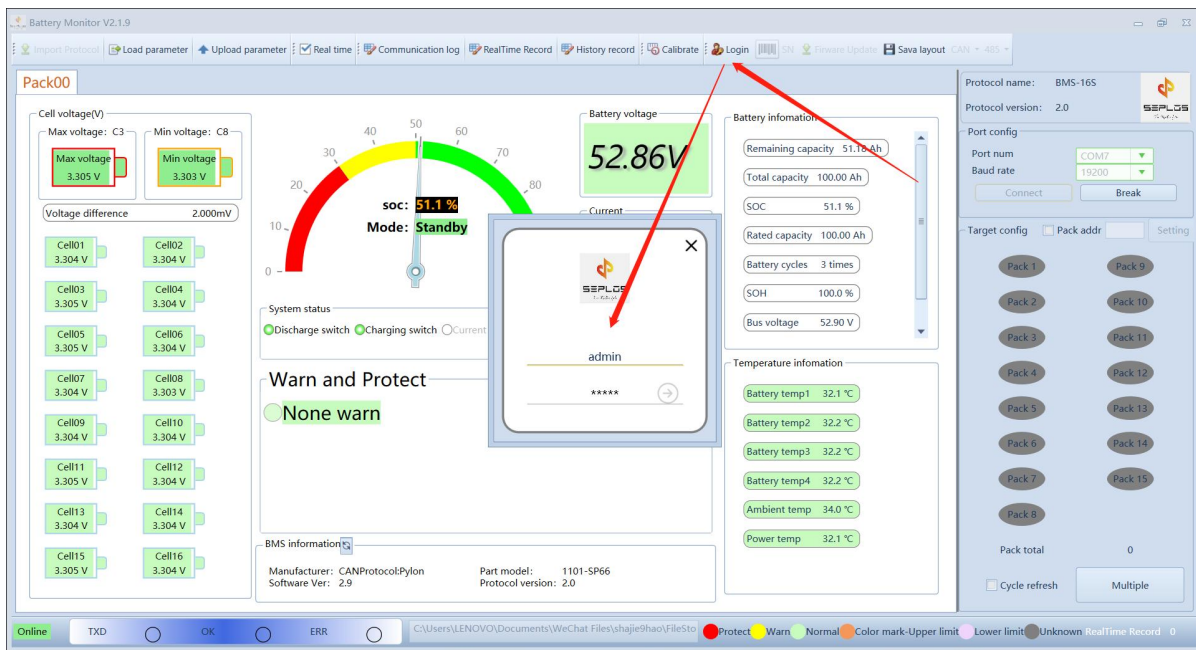


If successfully connected, the battery information will be displayed as the following screenshot.



## 5. Login

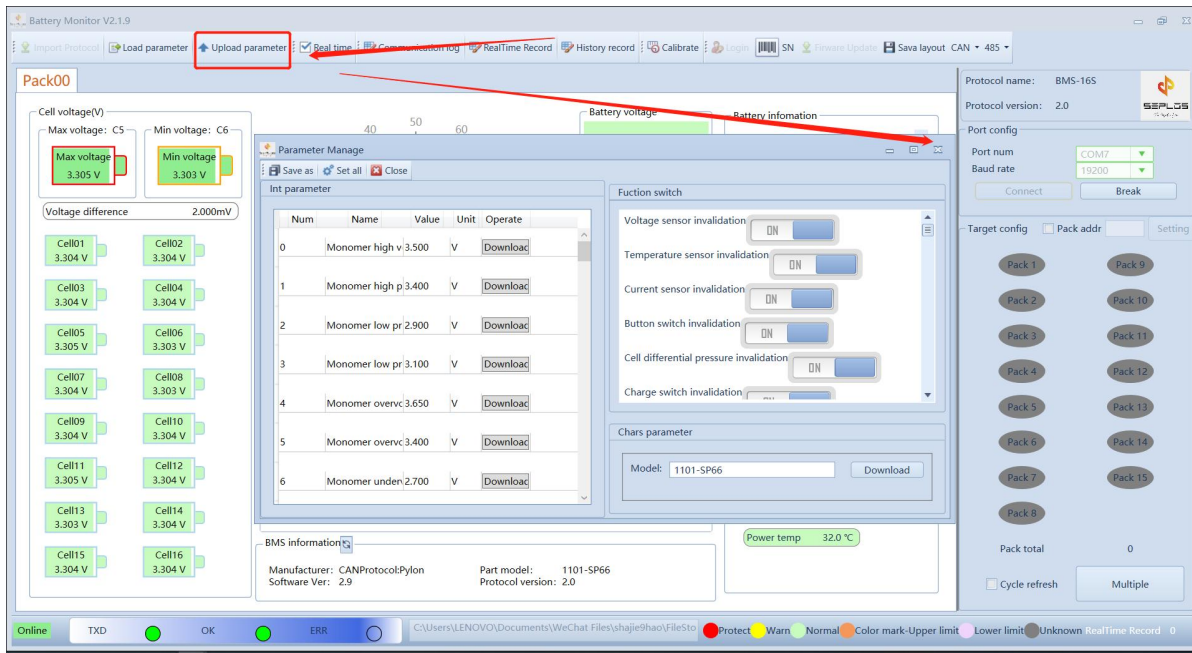
Login account: admin/Password: admin



## 6. Upload parameter (to upload parameter to the software)

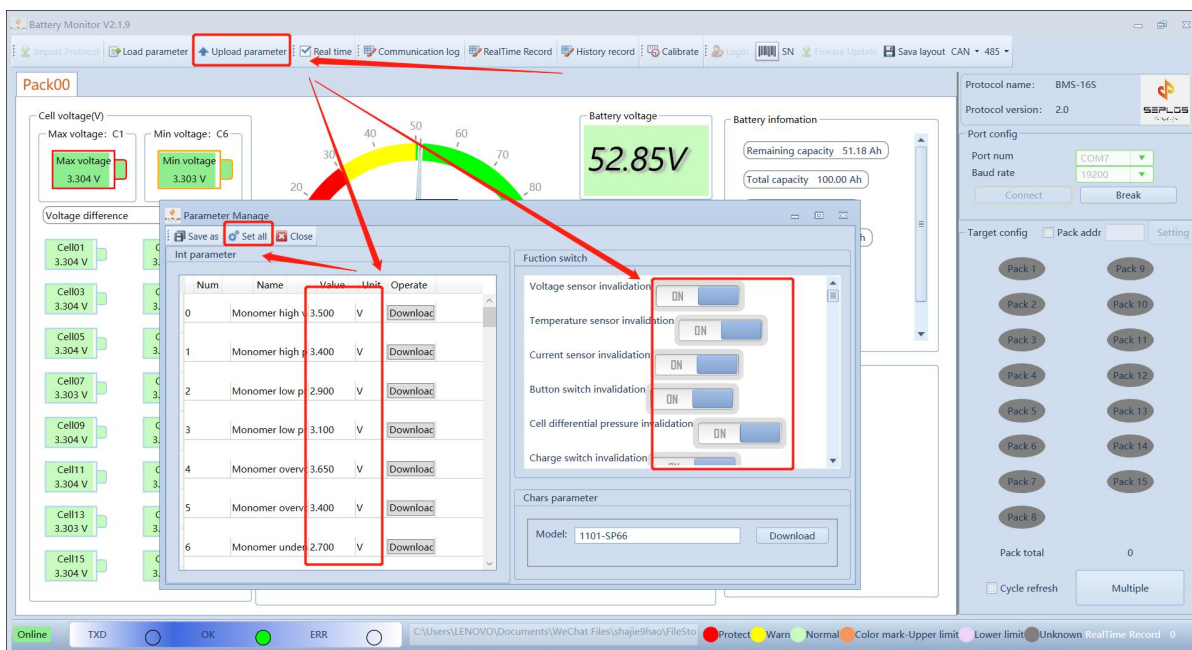
Load parameter (to load parameter settings from software)

**Note:** When running the software for the first time, need upload parameter, then load parameters



## 7. Modify parameter

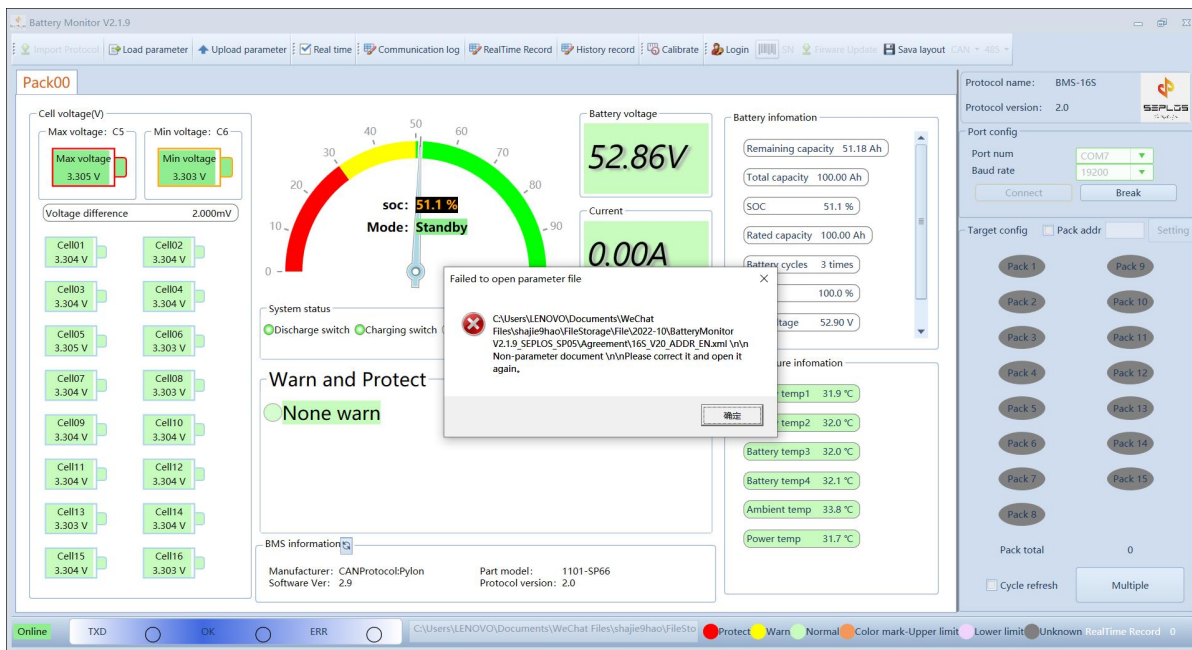
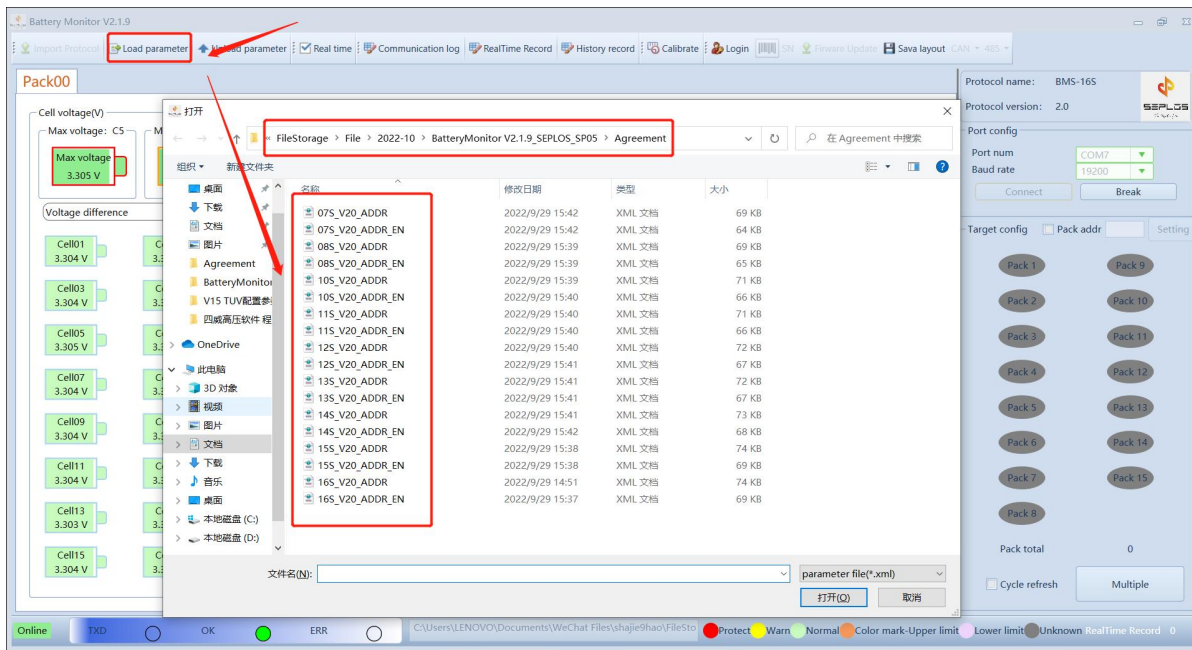
- Click 'upload parameter'
- Modify the parameter or turn on/off the functions
- Click 'Set all' to save the modification





## 8. Load parameter

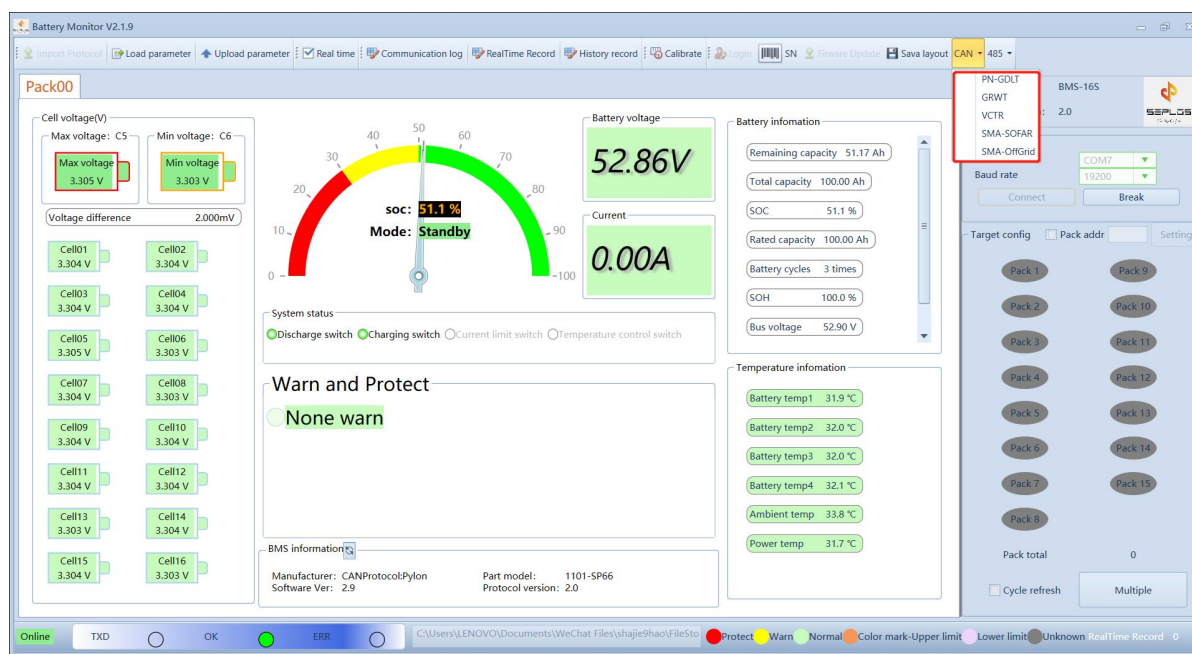
Click 'load parameter' - Click 'open'

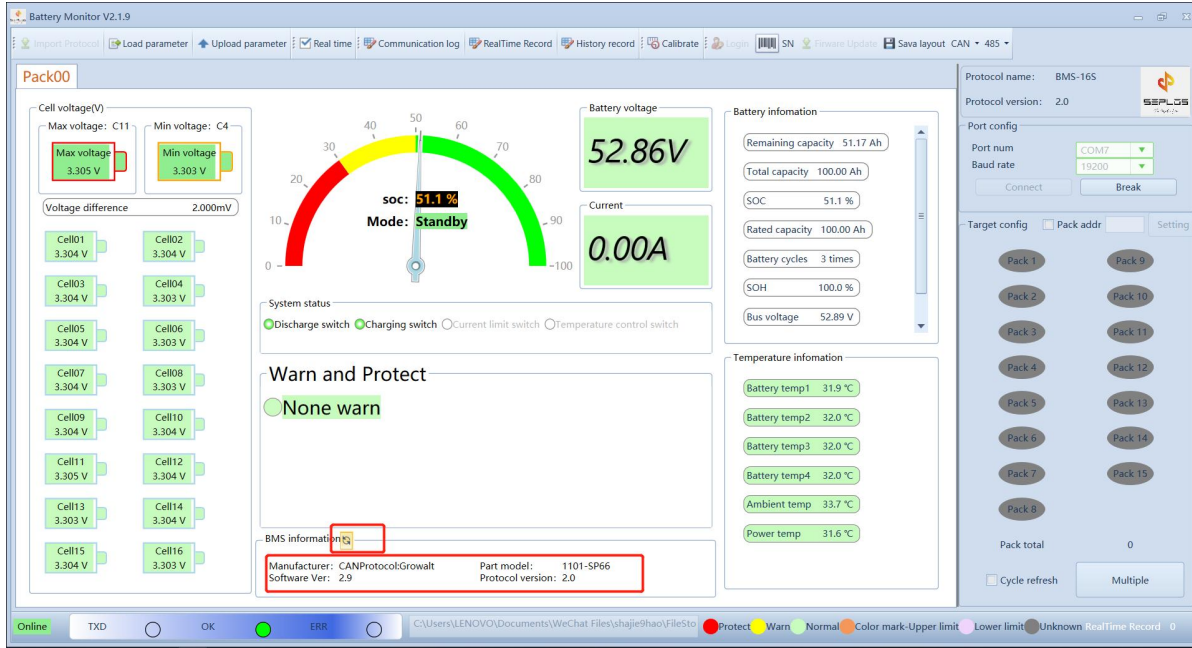
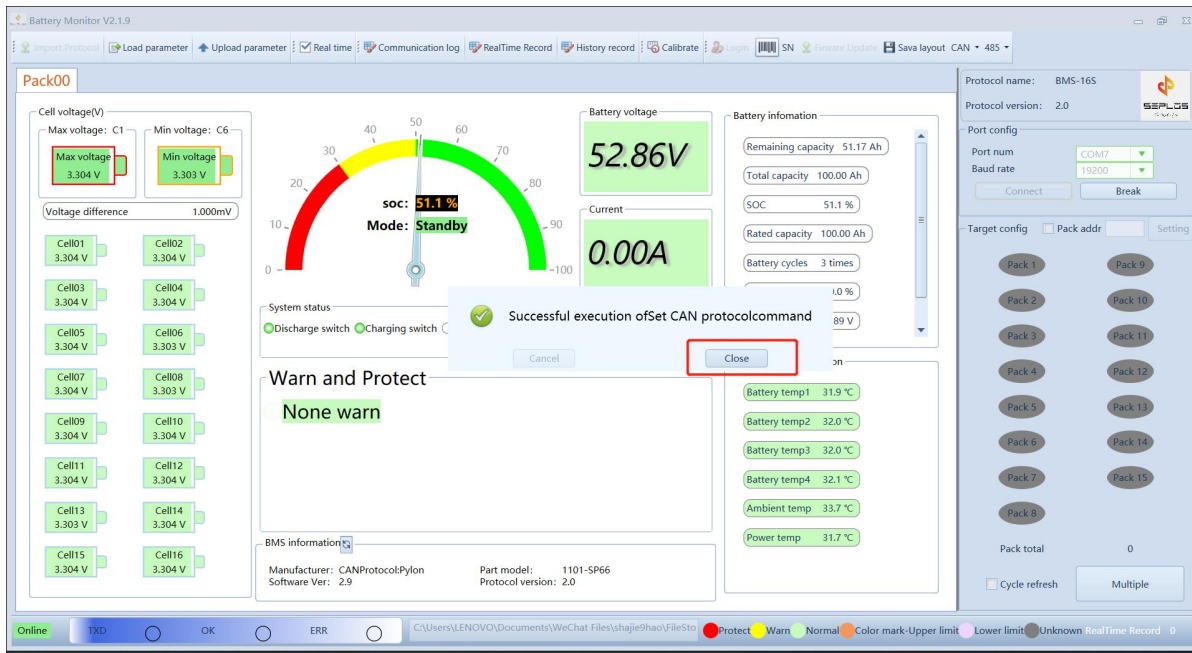


## 9. Communication protocol

| Protocol Type | Compatible Inverter                 |
|---------------|-------------------------------------|
| PN-GDLT       | Pylontech/Goodwe/TBB/ Luxpower/DEYE |
| GRWT          | Growatt SPF/SPH                     |
| VCTR          | Victron                             |
| SMA-SF        | SMA/SOFAR                           |
| GINL          | Solis                               |
| Studer        | Studer                              |

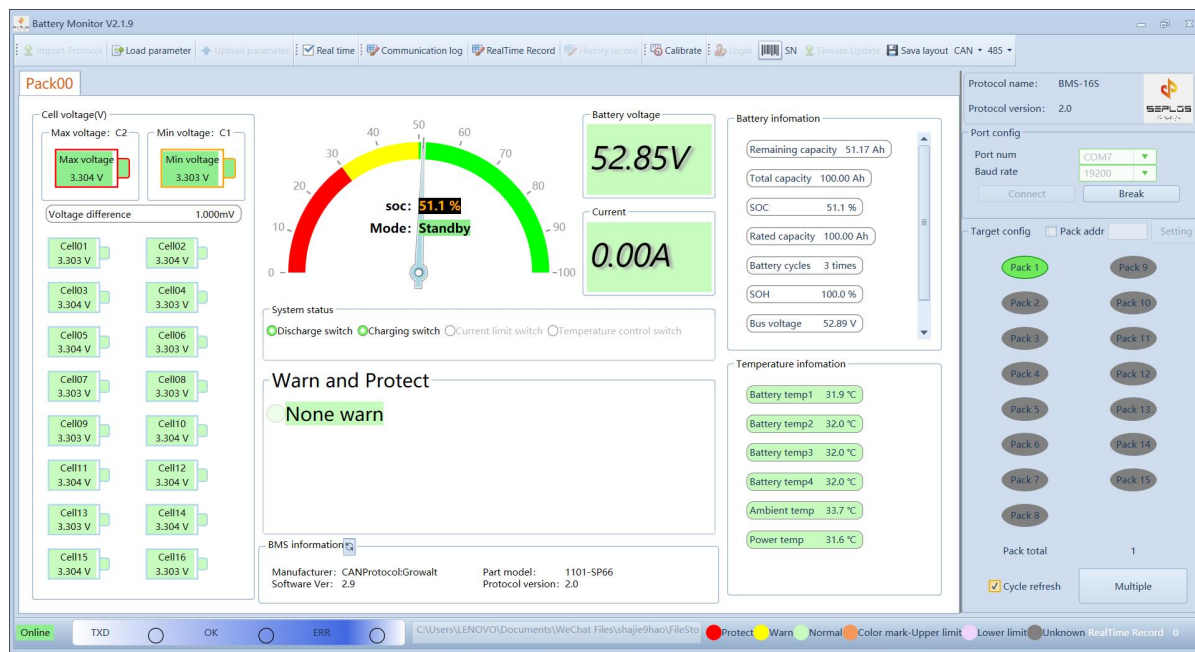
Click the pull-up menu of 'CAN' - and choose the corresponding protocols according to inverters - Click 'Close' refresh the software - The corresponding inverter manufacturer information will be displayed







## 10. Software interface



### Interface specifications

| Item               | Introduction  | Remark       |
|--------------------|---|--------------|
| Max voltage        | The maximum cell voltage value                              |              |
| Min voltage        | The minimum cell voltage value                              |              |
| Voltage difference | The voltage difference between highest cell and lowest cell |              |
| Battery voltage    | Battery pack voltage  |              |
| Current            | Charging/discharging current (-*)                           |              |
| Remaining capacity | The remaining capacity                                      | configurable |
| Total capacity     | The real capacity of battery pack                           |              |
| SOC                | State of charge   |              |
| Rated capacity     | Rated capacity  | configurable |
| Battery cycles     | 80% DOD for one cycle                                       |              |

|                            |                               |                        |
|----------------------------|-------------------------------|------------------------|
| SOH                        | State of health               | Green: ON<br>Grey: OFF |
| BUS voltage                | BUS bar voltage               |                        |
| Discharge switch           | Discharge indicator           |                        |
| Charging switch            | Charge indicator              |                        |
| Current limit switch       | Current limit indicator       |                        |
| Temperature control switch | Temperature control indicator |                        |
| Warn and protect           | Battery status                |                        |
| Battery temp1              | Temperature value of cell 1   |                        |
| Battery temp2              | Temperature value of cell 2   |                        |
| Battery temp3              | Temperature value of cell 3   |                        |
| Battery temp4              | Temperature value of cell 4   |                        |
| Ambient temp               | Ambient temperature           |                        |
| Power temp                 | MOSFET temperature            |                        |

## 11. Parallel connection

Maximum 16 packs connected in parallel. Choose the corresponding pack number according to DIP address settings with the software.

The paralleled pack quantity is will displayed.

Select the cycle fresh, all the paralleled packs' information will be displayed in turn.

And click multiple, all the packs' details is displayed in one page.

